

# Outdoor Fabrics Collection

# Outdoor Fabrics collection by P&M Furniture

Introducing our Premium Outdoor Fabric Collection, expertly designed for crafting bespoke furniture that redefines luxury and elevates your hospitality spaces. Every fabric in this collection has been meticulously chosen to combine timeless elegance with superior durability, offering the perfect blend of comfort and resilience.

Whether it's for lounges, patios, or poolside retreats, our fabrics are engineered to withstand the elements while maintaining their sophisticated charm, ensuring that your custom-made furniture not only enhances your space but endures with lasting quality and style.

## Group I

Fabric	Page
Coastline	4-7

## Group II

Fabric	Page
Sunhaven	8-11
Breezecrest	12-13
Palmshade	14-15





## COASTLINE

A collection which offers 100% waterproof, easy-to-clean fabrics, perfect for outdoor cushions, lounge seating, and bean bags.

Composition: 88% Polyester, 12% Polyethylene

Martindale: 80 000

Pilling: 5

Light fastness: 7

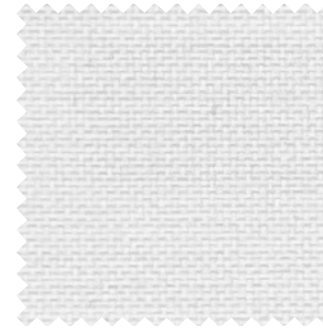
Characteristics: Canvas look, Waterproof, Water-repellent, Easy to clean

Colors: 24

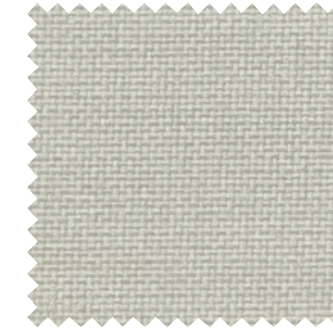
Certificates: Fire retardant available on request (BS 5852 O+1)

Group I

## Outdoor Fabrics collection by P&M Furniture



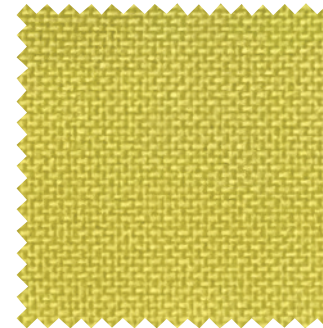
Coastline White



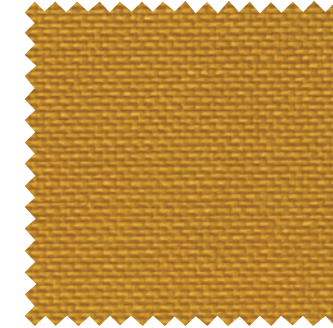
Coastline Ecru



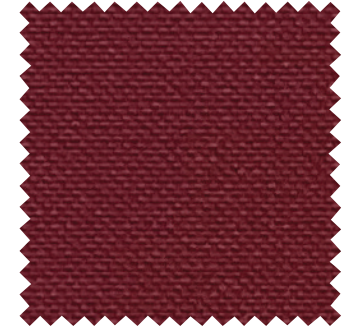
Coastline Nature



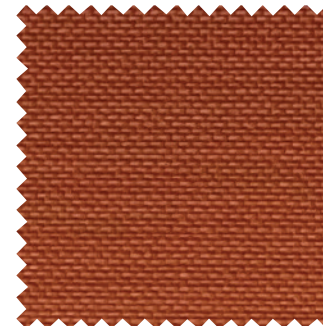
Coastline Soft Yellow



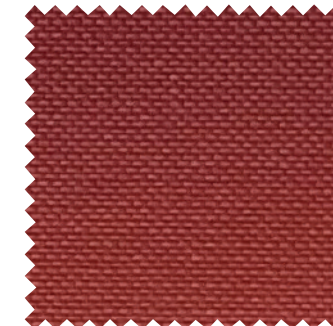
Coastline Ochre



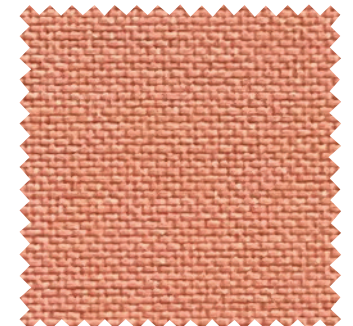
Coastline Bordeaux



Coastline Rust

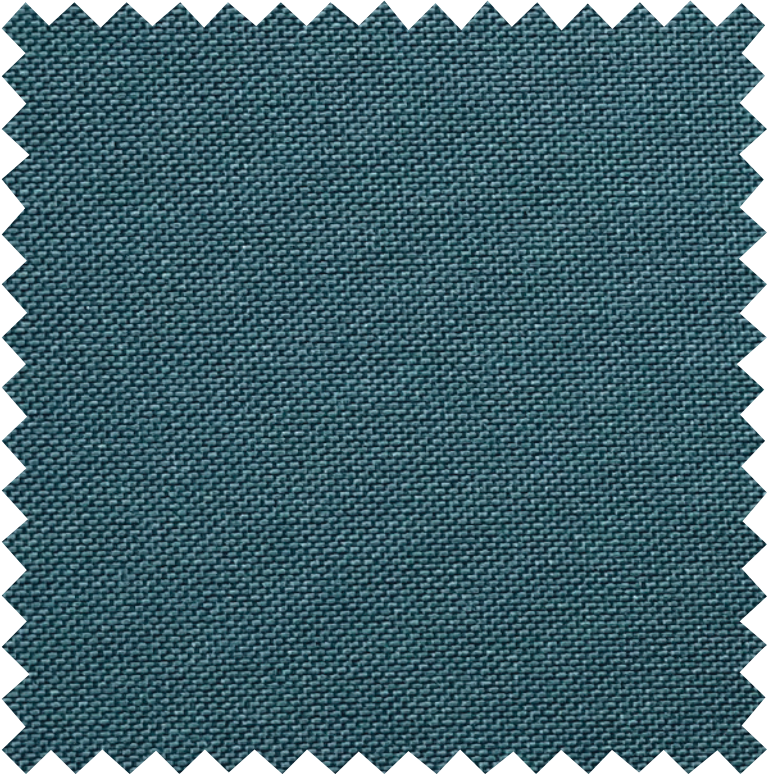


Coastline Marsala

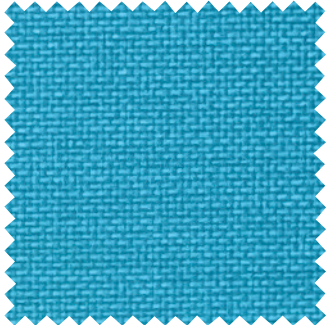


Coastline Coral





Coastline Ocean



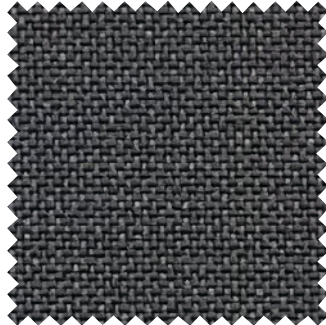
Coastline Aquamarine



Coastline Dark Green



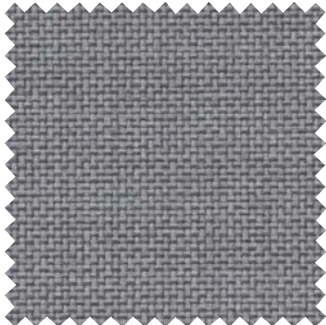
Coastline Sage



Coastline Smoke



Coastline Navy



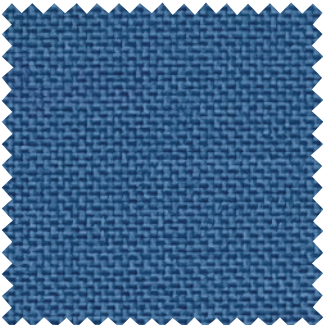
Coastline Silver Grey



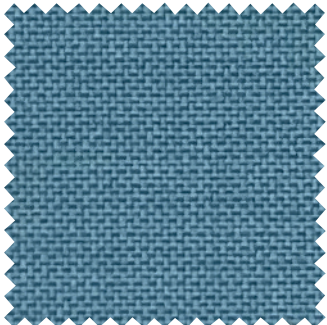
Coastline Almond



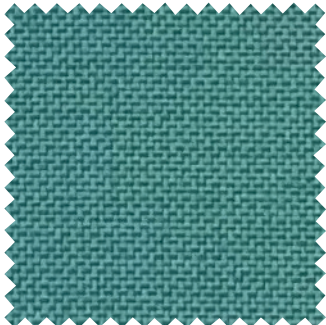
Coastline Black



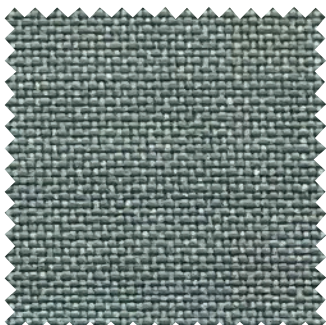
Coastline Cool



Coastline Sea Blue



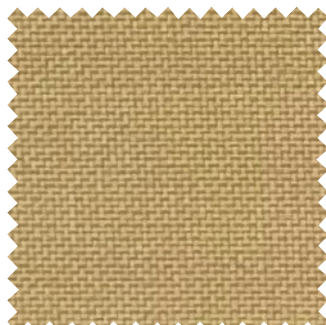
Coastline Mint



Coastline Sea Green



Coastline Pistache



Coastline Butter





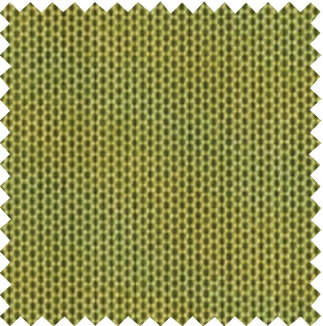
# SUNHAVEN

A collection that helps you get the look you want with fabrics tough enough to handle the elements of weather and comfortable enough to spend hours relaxing.

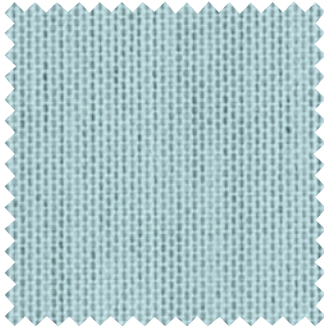
Composition: 100% Acrylic  
 Martindale: 30 000  
 Characteristics: Canvas, Antimicrobial, Bleach cleanable,  
 Stain Resistant, Water repellent, Easy clean, Phtalate free  
 Colors: 26  
 Certificates: Fire resistance US UFAC Class 1

Group II

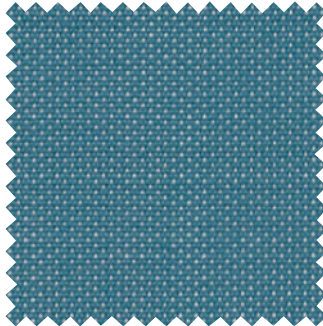
## Outdoor Fabrics collection by P&M Furniture



Sunhaven Lichen



Sunhaven Curacao



Sunhaven Adriatic



Sunhaven True Blue



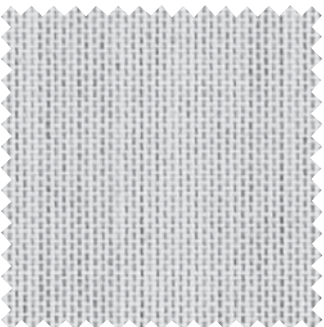
Sunhaven Canvas



Sunhaven Heather Beige



Sunhaven Stone



Sunhaven Marble

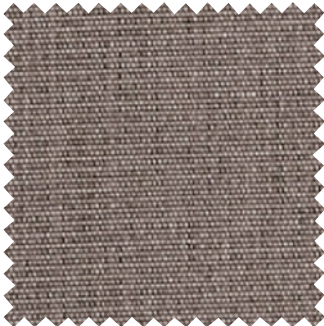


Sunhaven Autumn





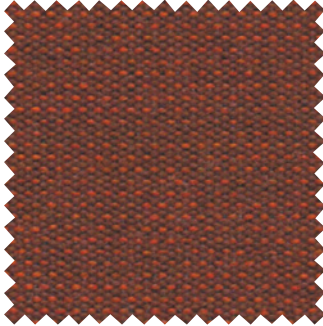
Sunhaven Pepper



Sunhaven Taupe Chine



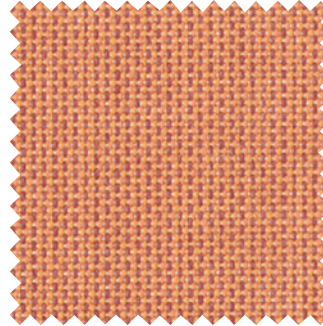
Sunhaven Pumpkin



Sunhaven Walnut



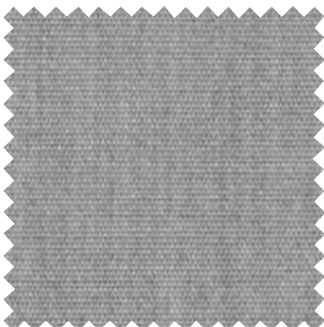
Sunhaven Trush



Sunhaven Coral



Sunhaven Paris Red



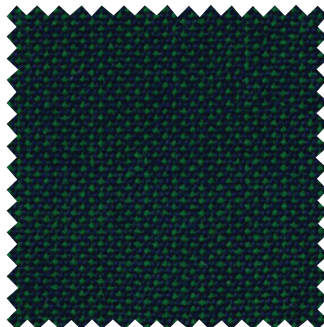
Sunhaven Lead Chine



Sunhaven Ardoise



Sunhaven Calathea



Sunhaven Como



Sunhaven Belharra



Sunhaven Flanelle



Sunhaven Black



Sunhaven Hive



Sunhaven Mistral



Sunhaven Merlot





## BREEZECREST

A collection of 100% Olefin fabrics that have proven themselves for years as an excellent Outdoor upholstery.

Composition: 100% Olefin

Martindale: 14 000

Characteristics: Water/Dirt/Chlorine/Seawater Resistant, Mold-free, Recyclable

Pilling: 5

Colors: 6

Certificates: Flammability BS EN 1021 – 1, 2006 – Cigarette, Oeko-Tex Standard 100

Group II

### Outdoor Fabrics collection by P&M Furniture



Breezecrest 1



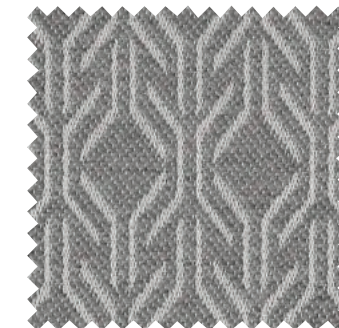
Breezecrest 2



Breezecrest 3



Breezecrest 4



Breezecrest 5



Breezecrest 6





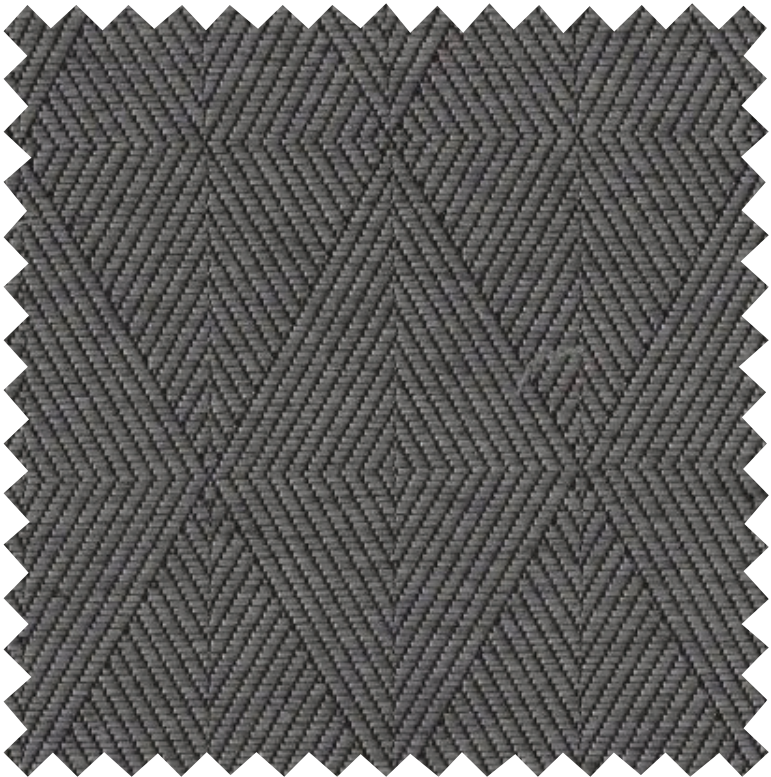
# PALMSHADE

A collection of 100% Olefin fabrics, for added style and durability, featuring elegant diamond-shaped patterns.

Composition: 100% Olefin  
 Martindale: 25 000  
 Characteristics: Water/Dirt/Chlorine/Seawater Resistant, Mold-free, Recyclable  
 Pilling: 5  
 Colors: 6  
 Certificates: Flammability BS EN 1021 – 1, 2006 – Cigarette, Oeko-Tex Standard 100

Group II

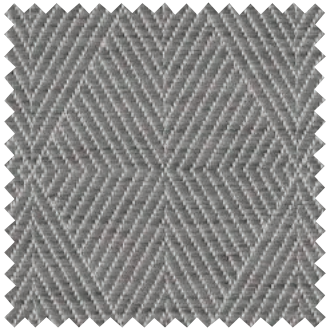
## Outdoor Fabrics collection by P&M Furniture



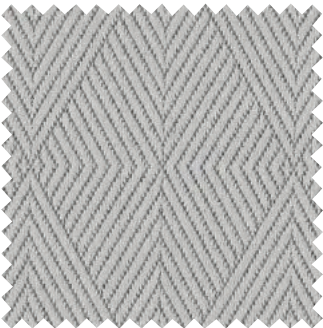
Palmshade 1



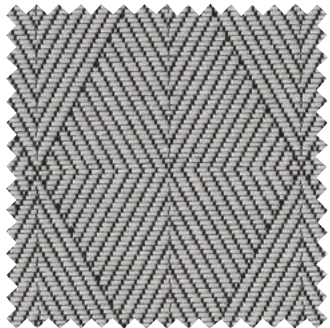
Palmshade 2



Palmshade 3



Palmshade 4



Palmshade 5



Palmshade 6





# Outdoor Fabrics Collection

---

Colors may vary from reality depending on your monitor



## Head office

**A** Jacob Merlostraat 24-26  
5961 AB Horst  
The Netherlands  
**T** +31 (0) 77 397 78 88  
**E** sales@pmfurniture.com  
**pmfurniture.com**

## Branch office Germany

**A** Kromsteg 43  
47638 Straelen  
Deutschland  
**T** +49 (0) 2834 942 9557  
**E** sales@pmfurniture.com  
**pmfurniture.de**

## Branch office Romania

**A** Str. Câmpul Pâinii, nr.30/A  
400629 Cluj-Napoca  
Romania  
**T** +40 (0) 364 143 781  
**E** office@pmfurniture.ro  
**pmfurniture.ro**